



# **Operator's Manual**

# **Capno Report Converter**

**For use with LifeSense II and  
RespSense II**

CE

**English**



Follow Instructions for Use

Nonin makes no claim for use of the product other than for those uses specified herein and disclaims any liability resulting from other uses. Observe all warnings, cautions and notes.

Unauthorized use, copying, or distribution of this manual is prohibited without written consent from Nonin Medical, Inc.

 **Nonin Medical, Inc.**  
13700 1<sup>st</sup> Avenue North  
Plymouth, MN 55441-5443, USA

+1 (763) 553-9968  
(800) 356-8874 (USA and Canada)  
Fax: +1 (763) 553-7807  
E-mail: [info@nonin.com](mailto:info@nonin.com)

**Nonin Medical B.V.**  
Prins Hendriklaan 26  
1075 BD Amsterdam, Netherlands

+31 (0)13 - 79 99 040 (Europe)  
Fax: +31 (0)13 - 79 99 042  
E-mail: [infointl@nonin.com](mailto:infointl@nonin.com)

[nonin.com](http://nonin.com)



MPS, Medical Product Service GmbH  
Borngasse 20  
D-35619 Braunfels, Germany

References to “Nonin” in this manual shall imply Nonin Medical, Inc. Nonin, LifeSense, RespSense, and nVISION are registered trademarks or trademarks of Nonin Medical, Inc. Microsoft® and Windows® are registered trademarks of Microsoft Corporation.

© 2015 Nonin Medical, Inc.  
10936-001-01

# Contents

<b>Capno Report Converter .....</b>	<b>1</b>
Intended Use .....	1
Symbols .....	1
<b>Installation .....</b>	<b>2</b>
System Requirements .....	2
Installing the Software .....	2
<b>Using the Software .....</b>	<b>3</b>
Download Data from the Monitor .....	3
Transfer Files to a PC .....	3
View .xism File in Excel .....	4
Open .asc File in nVISION .....	4
<b>Software Description .....</b>	<b>5</b>
Capno Report Converter Window .....	5
File Menu .....	5
Tools Menu .....	5
Tools > Options .....	5
Help Menu .....	6
Help > Info .....	6
Help > About .....	6





# Capno Report Converter

## *Intended Use*

The Capno Report Converter software is an optional accessory for use with Nonin's LifeSense<sup>®</sup> II and RespSense<sup>™</sup> II monitors. It is intended for use by healthcare professionals to convert downloaded patient data into .asc and .xism files and generate reports using nVISION<sup>®</sup>.

**CAUTION: Federal law (USA) restricts this device to sale by or on the order of a licensed practitioner.**

## *Symbols*

Symbol	Description
	Follow Instructions for Use.
	CE Marking indicating conformance to EC Directive No. 93/42/EEC concerning medical devices.
	Authorized representative in the European Community.
	Manufacturer

# Installation

## ***System Requirements***

- Window<sup>®</sup> operating system: 7 (32 and 64 bit), 8.1 (32 and 64 bit), and 10 (32 and 64 bit)
- CD/DVD drive
- USB port (2.0 or greater)
- 1 GB RAM
- 2 GB free space on hard drive
- Microsoft Excel 2010 or later

## ***Installing the Software***

The Capno Report Converter software works with Microsoft Windows operating systems. It allows users to use a USB flash drive to transfer recorded patient data from the device to a PC and then import the data into nVISION.

To install the software:

1. Insert the CD into the computer's CD/DVD drive.
2. Installation should start automatically. If it does not start automatically, initiate installation by:
  - Windows 7 operating systems: From the Start menu, place the cursor in the Search box and type **D:\setup.exe** (where D is the letter of the CD/DVD drive).
  - Windows 8.1 operating systems: Right click on the Start screen to display the App bar. Click or tap **All apps** on the App bar, and then click or tap **Computer**. Double-click or double-tap the CD/DVD icon or the folder with the installation set-up. Double-click or double-tap **setup.exe**.
  - Windows 10 operating systems: From the Start menu, click or tap File Explorer. Double-click or double-tap the CD/DVD icon. Double-click or double-tap the CD/DVD icon or the folder with the installation setup. Double-click or double-tap **setup.exe**.
3. Follow the on-screen instructions until the software install completes.

## Using the Software

Before using the software, patient data must be downloaded from the monitor onto a USB flash drive. See the system operator's manual for additional USB flash drive information.

### Download Data from the Monitor

**NOTE:** Data cannot be downloaded if there is a medium or high priority alarm.

1. With the monitor on, but not connected to a patient, connect a USB flash drive to the monitor.
2. In the "USB Flash Drive Detected" pop-up window, *Download Memory?* displays.
3. Press **OK** to download data. Press **Cancel** to return to the operating screen.
4. Once the data download is complete, the "Download Memory Complete" pop-up window displays.
5. In the "Download Memory Complete" pop-up window, *Clear Memory?* displays.
6. Press **OK** to clear memory.
7. In the "Clear Memory" pop-up window, *Are you sure?* displays.
8. Press **Yes**.
9. *Memory Cleared* displays.
10. Press **OK** and remove USB flash drive.

USB Flash Drive Detected  
Download Memory?

OK Cancel

Downloading Memory...  
Please Wait...

Download Memory Complete  
Clear Memory?

OK Cancel

Clear Memory  
Are You Sure?

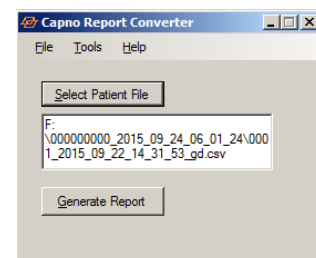
OK Cancel

Memory Cleared  
Press OK, Then Remove USB Device

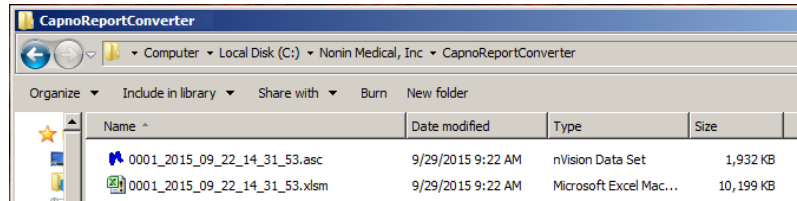
OK

### Transfer Files to a PC

1. Insert the USB flash drive into a USB port on the PC.
2. Open the software:
  - For Windows 7, click **Start > All Programs > Capno Report Converter**.
  - For Windows 8.1, right click on the Start screen, and then click the **All apps** button on the App bar. Locate the **Capno Report Converter** group.
  - For Windows 10, click **Start > All apps > Capno Report Converter**.
3. Click **Capno Report Converter.exe**.
4. The software program opens and displays the Capno Report Converter window.
5. Click **Select Patient File**.
6. Browse to the files on the USB flash drive and select the desired .csv file. Once selected, the file path and name displays in the Capno Report Converter window.
7. Click **Generate Report**.



8. After the file converts, two files are saved to the default data directory:
  - .asc. This file can be imported into nVISION.
  - .xlsm. This Excel file automatically opens.



## View .xlsm File in Excel

The Excel file automatically creates graphs (Graph, CapnoWaveform, SpO<sub>2</sub>, PR, EtCO<sub>2</sub>, RR) from the patient data. Additional worksheets display data and the monitor's settings.

The first worksheet (Graph) displays a summary of the SpO<sub>2</sub>, PR, EtCO<sub>2</sub>, and RR plots.

## Open .asc File in nVISION

---

**NOTE:** Requires nVISION 6.4 or greater to be installed on the PC.

---

1. Open nVISION.
2. Click **File > Import**. Import Data dialog box displays.
3. Locate and click on the data set to be imported. The starting folder is the nVISION default data storage path.
4. Select a data set.
5. Click **Open**. The file displays in nVISION as an Oximetry report.
6. See nVISION Help or the nVISION User Guide for information on how to use nVISION.

# Software Description

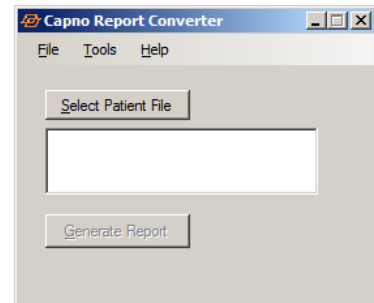
## Capno Report Converter Window

Clicking the “Select Patient File” button allows the user to browse to the files on the USB flash drive and select the desired .csv file.

If the complete file path is known, it can be copied/pasted into the screen.

Once a patient file has been selected, the Generate Report button creates an .asc file and an .xism file.

See *Transfer Files to a PC* for more information.



## File Menu

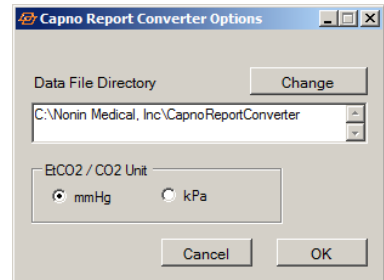
To close the program, click **File > Close**.

## Tools Menu

### Tools > Options

The Options window allows the user to change the data file directory location or change the units of measure.

1. Click **Tools > Options**.
2. Click **Change** to browse to the new location.
3. In the EtCO<sub>2</sub>/CO<sub>2</sub> Unit field, select a unit of measure. The default is mmHg.
4. Click **OK** to save. Click **Cancel** to close the Options window without saving changes.



## Help Menu

### Help > Info

The Capno Report Converter Info window provides basic PC system requirements for using the software program.

The window says:

Note:

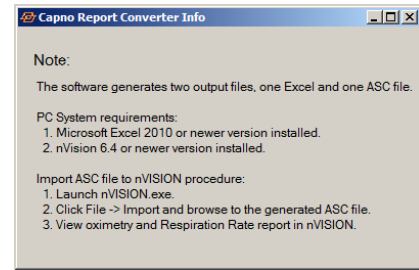
The software generates two output files: one .xlsm (Excel) and one .asc file.

PC system requirements:

1. Microsoft Excel 2010 (or newer) installed.
2. nVISION 6.4 (or newer) installed.

Procedure to import .asc file into nVISION:

1. Launch **nVISION.exe**.
2. Click **File > Import**, and browse to the generated .asc file.
3. View the oximetry and respiration report in nVISION.



### Help > About

The About Capno Report Converter window displays software program information, including the version.

